

Homework at Ravens Wood

'Pupils' homework is used well to engage pupils and extend their learning beyond the classroom.'
- Ofsted report April 2018

1. Rationale

To provide teachers and parents/carers with clear guidelines for practice and to provide students with a consistent experience to support their learning through homework and feedback.

2. Research

Research shows that a strong triangular relationship between parents, school and pupils results in more effective learning. We see homework, independent study and preparation as important parts in the home school partnership that we value so highly. By working with parents/carers to explain our ethos, make expectations clear and establish effective routines we can strengthen this relationship and help parents to have an active involvement in their son's education.

We are a research-informed school and as such our approach to all elements of teaching and learning is shaped by credible evidence that shows impact upon student learning.

Research shows that homework set for the sake of providing students with an activity between lessons has limited, if not negative, impact upon student learning and progress (Hattie 2009). As a result at Ravens Wood we will endeavour to set meaningful homework on a regular basis to support student learning.

3. When Homework is Set

- It will always be set using Show My Homework website
- It will always be beneficial to student learning.
- Clear success criteria will be given to the students within the 'task description' section.
- Sufficient time in the lesson will be given to explain the task set
- A clear deadline for completion of homework will be noted on the subject teachers' Show My Homework page
- An appropriate estimated completion time for tasks will be given in the 'important information' section to support students (and parents) in dedicating sufficient but realistic time to homework.
- Punctually submitted homework will be acknowledged and feedback will be given in a variety of ways (peer/teacher/written summary, or verbal feedback as appropriate/Show My Homework test score).

4. Additional Ways of Supporting your Child with Homework

There are a range of straightforward but highly effective activities that you could use to help support your child with their homework and independent study and below are just a few examples:

- Quizzing
- Recall of key terms, definitions and concepts
- Revising and practicing key spellings, equations and terminology
- Background research and contextual knowledge
- Producing flashcards to help with revision of key characters, quotations, facts and information

5. English and Science Homework at Key Stage 3

All homework in **English** and **Science** will be retrieval based, with the focus on students recalling key information, skills and knowledge so that they are prepared and ready to learn, making the most of their time in lessons.

Retrieval practice involves recreating something you've learned in the past from your memory, and thinking about it right now. In other words, a while after you've learned something by reading it in a book or hearing it in a class or from a teacher, you need to bring it to mind (or "retrieve" it). The word after is really important; you need to forget the information at least a little in order for retrieval to be effective! You don't want to just immediately recite what you see in the book or what the teacher told you, but rather you want to bring the information to mind on your own, once it starts to get a little more difficult to remember what you studied.

<http://www.learningscientists.org/blog/2016/6/23-1>

6. Examples of Retrieval Based Tasks

5 A Day Retrieval (1)

Peer Assessed by:

/10

Poetry

| | |
|---|---------|
| What type of structure is <i>When We Two Parted</i> ? | C _____ |
| Name 2 poems with the theme of longing. | |
| <i>'Not near, not near!' her eyes beseech</i> – Poem and technique? | |
| Who Wrote <i>Climbing My Grandfather</i> ? | |
| <i>'Like a winged seed loosened from its parent stem'</i> – Poem and technique? | |

An Inspector Calls

| | |
|--|--|
| What are Priestley's political views? | |
| <i>'it's better to ask for the earth than to take it'</i> – Who said it? | |
| List 3 adjectives to describe Mr Birling | |
| What is a system where people are ranked according to status | |
| <i>'But it was all over and done with, last summer'</i> – Who said it? | |

Challenge – Analyse the following quote in your book

'good, solid, furniture'

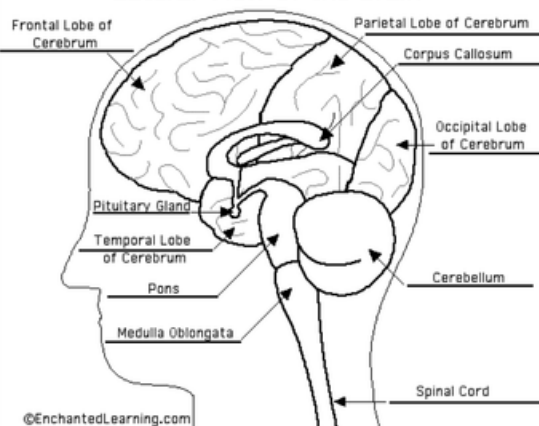
| Word | Meaning |
|----------------|---|
| | consisting of or resembling dung or faeces. |
| Sesquipedalian | |
| | the abatement of a fever (cease boiling) |
| Eucatastrophe | a sudden and favourable resolution; a happy ending. |
| Commensalism | |
| | inability to recognise faces of familiar people. |

Lateral View of the Brain



©EnchantedLearning.com

Lateral View of the Brain



©EnchantedLearning.com