

Oakley Road, Bromley, Kent, BR2 8HP  
Telephone: 01689 856050 Facsimile: 01689 869948 E-Mail:  
office@rws.uk.net  
Web: [www.ravenswood.bromley.sch.uk](http://www.ravenswood.bromley.sch.uk)



# WELCOME TO RAVENS WOOD



SEPTEMBER 2025



# WELCOME TO RAVENS WOOD

## CONTENTS

1. Welcome to Ravens Wood .....	page 3
2. Preparing for September .....	page 4
3. Pastoral Care .....	page 5
4. Life at Ravens Wood .....	page 6
5. Uniform .....	page 7-8
6. Attendance .....	page 9
7. Enrichment .....	page 10
8. Cashless Catering .....	page 11
9. Safeguarding .....	page 12
10. Medication .....	page 13
11. Stay Connected .....	page 14
12. News & Updates .....	page 15
13. Homework .....	page 16
14. Curriculum .....	page 17-19
15. Reading List .....	page 20
16. Ravens Wood PSFA .....	page 21
17. Friends of Ravens Wood .....	page 22
18. RWS Students .....	page 23



# WELCOME TO RAVENS WOOD

We are very pleased to welcome your son to Ravens Wood School this September. The move to secondary school is an important and exciting step, and we look forward to working closely with you to support a smooth and positive transition. By building a strong partnership between home and school, we can ensure your son makes the most of the opportunities ahead and feels confident, supported, and ready to thrive.

## Our Black and Green Values:

### Kindness, Pride, Ambition, Respect, Community, Integrity

At Ravens Wood, our Black and Green values are at the heart of everything we do. They shape our students' character, guide their actions, and define what it means to be part of our school.

We celebrate kindness, encourage ambition, take pride in achievements, and foster respect and inclusivity. These values, captured in our ethos of Learn, Lead, Excel, support every student on their journey to becoming the best they can be.

## ***We are Black & Green!***

### Our school vision- the 3 Cs: Culture, Character and Currency

- **Culture:** We cultivate a learning environment that ignites a passion for knowledge and fosters intellectual curiosity within a tight-knit and supportive community.
- **Character:** We are dedicated to nurturing the individual character of each student, promoting values of dignity, integrity, self-discipline, and self-esteem.
- **Currency:** Our rich and diverse curriculum not only drives academic excellence but also equips our students with the currency to unlock opportunities for their future.



Your son will also be able to take part in our extensive and highly popular Co-Curricular enrichment programme. To explore the wide range of opportunities on offer, follow us on Instagram (@ravens.wood.school), or join our WhatsApp Broadcast Channel by scanning the QR code on page or visit our website at [www.ravenswood.bromley.sch.uk](http://www.ravenswood.bromley.sch.uk).

We understand that starting a new school can bring both excitement and uncertainty. We hope the information provided helps to support a smooth and positive transition into life at Ravens Wood. We look forward to welcoming your son into our community and to the rewarding journey that lies ahead.



Warm regards,

Ms. Lester, Headteacher

# PREPARING FOR SEPTEMBER



## Enrolment Forms - to be completed by 6th June

A welcome email will be sent from Applicaa for you to sign up and complete your son's Application Form. Use the checklist below to make sure all enrolment forms are complete



	Passport size photo of your child to be uploaded to Applicaa and proof of identity - Copy of Passport/Birth Certificate to be uploaded to Applicaa
	Application Form to be completed on Applicaa by <b>Friday 6th June 2025</b>
	Medical Information Letter / Individual Health Care Plan (IHCP) if applicable
	Music Lessons Application Form if applicable

## Information Day - 1st July 9.00am-2.30pm

On **Tuesday 1st July** your son is invited to spend the day at Ravens Wood School to experience a taste of life with us. This is when all Year 6 students visit their new secondary school for one day. We expect your son to arrive at the school between **9.00-9.15am** and he can be collected from school at **2.30pm**. Students should be accompanied at drop off and collection. If your son cannot attend on this day, please telephone the school and inform the Admissions Officer on 01689 856050. On the day, we ask students to:

- Wear their full primary school PE Kit.
- Bring a bag with them containing a pencil case, a drink/water bottle and a snack for the morning break if required. A free lunch will be provided. Alternatively, students can bring a packed lunch if they prefer. Please note, no fizzy drinks or products containing nuts are allowed as we are a **NUT AWARE SCHOOL**.

Before the day we ask parents and carers to complete their online paperwork and include a **keyword** for use on 1st July. For safeguarding purposes, a **keyword** will be required by whoever collects your child at the end of the day.

## Information Evening - 1st July, 6.00-8.00pm

An important Information Evening will be held for parents/carers and their children on the evening of Tuesday 1st July from 6pm-8pm. It is designed to provide you with whole school information and give you the opportunity to meet your son's Form Tutor and other key staff. More information will follow.

## Sports Team Trials

Date	Year Group	Sport	Start Time	Finish Time
Wednesday 3rd September	Year 7	Rugby Trials	After School 2:50pm	4:30pm
Thursday 4th September	Year 7	Basketball Trials	After School 2:50pm	4:30pm
Friday 5th September	Year 7	Football Trials	After School 2:50pm	4:30pm
Saturday 6th September	Year 7	2nd Rugby Trial	Times TBC	TBC

Please visit <https://www.ravenswood.bromley.sch.uk/curriculum/sports-at-rws/> or one of the PE social media pages for information nearer the time (See p.14 for details).

## Open Morning 2025

All Year 7 students are asked to represent their school as tour guides on the morning of **Saturday 20th September 2025**.



# PASTORAL CARE

## Form Tutor: Your Son's Daily Guide

Each day at Ravens Wood School starts and ends with form time, led by your son's Form Tutor—a key figure who will usually stay with the group from Year 7 through to Year 11.

## What Happens in Form Time?

Students start the day at 8.30am with their Form Tutor. During Registration, the register is taken, uniform, appearance and equipment is checked to ensure the students are prepared for the day, and phones are handed in to the Form Tutor for safe keeping in the form locker. In addition, students work through the daily 'Ready to Learn' slide with their Form Tutor to encourage deep thinking and set them up for the day ahead.

Your son's Form Tutor will:

- Record attendance and punctuality
- Lead sessions on teamwork and being part of a positive community
- Deliver Personal, Social, Health, and Education (PSHE)



## The Form Tutor's Role

They provide the first line of pastoral care, including:

- Monitoring and encouraging academic progress
- Promoting excellent attendance (aiming for 100%)
- Supporting participation in clubs and sports
- Addressing any pastoral concerns
- Communicating with other staff when needed
- Your Form Tutor is your go-to contact for any information that needs to travel between home and school.

## The Head of Year's Role

The Head of Year 7 leads a strong team of eight Form Tutors and plays a central role in your son's development throughout his first year.

*What does the Head of Year do?*

- Hold weekly assemblies for the year group
- Celebrate student achievements
- Manage and respond to behavioural issues
- Encourage every student to get involved in school life
- Together with Form Tutors, the Head of Year helps create a safe, supportive, and inspiring start to secondary school.



## Ready to Learn

**Amazon forest felled to build road for climate summit**

A new four-lane highway cutting through tens of thousands of acres of protected Amazon rainforest is being built for the COP30 climate summit in the Brazilian city of Belém. It aims to ease traffic to the city, which will host more than 50,000 people - including world leaders - at the conference in November. The state government touts the highway's "sustainable" credentials, but some locals and conservationists are outraged at the environmental impact.

**Question** - Why should leaders lead by example?

[Click here to read more.](#)

**Global Recycling Day**

Every year, March 18<sup>th</sup> is Global Recycling Day. This day is an opportunity for us all to reflect on how sustainable our lifestyle is and what more we can do. Below are three things we are asked to consider this GRD:

**Reuse:** give things a second life by repairing them, transforming them, or swapping them.

**Reduce your consumption:** prioritise sustainability, buy in bulk, repair instead of throwing away and so on.

**Question** - How many of these things do you already do?

**Sort your waste:** separating the different types (paper, cardboard, plastic, glass, metal) makes the process easier.

**Question** - Should we ensure future generations inherit a healthy planet or should we use the planet to make our lives easier? Can we do both?

**The Importance of Accessibility**

The scene below, taken from Waterloo Road, has highlighted the impact accessibility can have on feeling included.

**Question** - What can we learn from the scene?

**RMS Food for Thought**

**Question** - Should we ensure future generations inherit a healthy planet or should we use the planet to make our lives easier? Can we do both?

**Ravens Wood School**

**Our Classroom Expectations**

**We are kind and respectful**

**We arrive on time with the correct equipment and start the Hook**

**We actively listen and do not talk when someone else is talking**

**We follow staff instructions when given and ask for help if needed**

**We work hard and allow others to do the same**

## Head of Year

Assistant  
Head of Year



Form Tutor  
7A

Form Tutor  
7B

Form Tutor  
7C

Form Tutor  
7D

Form Tutor  
7E

Form Tutor  
7F

Form Tutor  
7G

Form Tutor  
7H

# LIFE AT RAVENS WOOD



## Our School Day

Tutor Time	8.30am - 8.50am
Period 1	8.50am - 9.50am
Period 2	9.50am - 10.50am
Break	10.50 - 11.10am
Period 3	11.10am - 12.10pm
Period 4	12.10pm - 1.10pm
Lunch	1.10pm - 1.50pm
Period 5	1.50pm - 2.50pm
Tutor Time	2.50pm - 3.10pm (3.20 pm on assembly days)

On a typical school day, the school dining hall is open from 8.00am for breakfast.

There are five one-hour lessons (known as periods), a morning break and a lunch break. The school day ends with Tutor Time, where students have a programme of reading, silent work, academic mentoring or assemblies.

Every week, each year group will have a Senior Leadership assembly in the Main Hall and this will take place until 3.20pm. They will also have a Year Group assembly once a fortnight.

As part of our transition support, our Year 7s will be released to break and lunch 10 minutes early. This gives our Year 7 students early access to the canteen. The only exception to the early break and lunch arrangements are during assessment weeks when all lessons must be the full 60 minutes.

## Equipment Expectations

Students cover all of their exercise books with plastic wallets. Students are asked to purchase these from the school and they can be bought in September via ParentPay. You will also be able to pre-order these covers during our Y7 Information Evening on Tuesday 1st July (more information to follow).



## Your school bag should contain:

A pencil case with a minimum of:

- 2 blue pens, 2 black pens, 2 green pens
- 2 pencils
- Highlighter pen
- Sharpener
- Rubber
- 30cm ruler
- Glue stick



Our students will also require:

- Reading book
- Scientific calculator
- Geometry set
- Water bottle



Maths items can be purchased from the school in **September** and are usually cheaper than high street prices. Reading books can be borrowed from our school library.



# UNIFORM



**All the time your son is in his RWS uniform he is representing the school.**

**Therefore, his behaviour and uniform should always reflect the highest of standards, from when he leaves home in the morning to when he returns home after school.**

Uniform sales are run on a voluntary basis with all proceeds going to the PSFA. The PSFA will be selling school uniform in school on four separate occasions as follows, please book your appointment using the following links:

**Friday 27th June 4.30pm - 7pm**

**Saturday 28th June 9.15am - 11.45am**

**Friday 4th July 4.30pm - 7pm**

**Saturday 5th July 9.15am - 11.45am**

*Pre-loved uniform will also be available to purchase on the above dates.*

*Last minute uniform items can be purchased from the school on Thursday 14th August and Monday 1st September, between 10am and 1pm.*

**Please ensure that you book your uniform appointment for one of the main summer sales as soon as possible.** The PSFA will be there to guide you through what is needed. There will be no access to school uniform during the school holidays.

Top up items can be ordered throughout term time for collection from the main Visitor Reception. Any queries please email [rwspfauniform@yahoo.com](mailto:rwspfauniform@yahoo.com)

## **Full School Uniform**

- |  |  |
|--|--|
| • Black trousers                                     |  |
| • White shirt tucked in                              | <b><u>Not permitted</u></b>                                      |
| • School tie   |  |
| • Blazer on (unless shirt sleeve order)              | • Energy Drinks  |
| • Ravens Wood jumper / Plain black jumper - no logos | • Trainers   |
| • Black school shoes (trainers are not allowed)      | • Zip-up Sports Tops on non-PE Days (including RWS branded tops) |
|  | • Hoodies  |
|  | • Jewellery  |

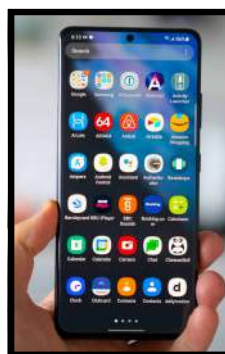


Uniform contact:  
**[rwspfauniform@yahoo.com](mailto:rwspfauniform@yahoo.com)**  
Card payments only

## **Electronic Devices**

The school has a clear policy regarding the use of mobile phones – they are not allowed to be used on site during the school day. Students hand in

mobile phones to Form Tutors in morning registration, where they are locked away and returned during afternoon registration. Electronic devices used in school are subject to confiscation, and we will call upon parents/carers to collect such items from the school office.



- *Students will be asked to remove any items that are not permitted – these may be confiscated.*
- *Where possible, the school will provide spare items of uniform to change into, including school shoes, blazers & ties.*
- *Students who do not have the correct school shoes are not permitted to wear trainers or other footwear and will be expected to borrow school shoes.*

Prices are subject to change as stock is replaced. Black trousers/white shirts are not supplied and can be purchased from High Street retailers

# UNIFORM



## Uniform Price List

Blazers	Ties	Sweatshirts	Rugby Shirts
29" – 36": £42.00	Small £7.50	XXS – Small: £16	XXS – Small: £32
37" +: £49.50	Standard £8.00	Medium – XL: £19	Medium – XXXXL: £37
T-Shirts (Black / White)	Socks	Shorts Football/PE	PE Tracksuit *
9-10 – XS: £10.00	XS - S: £8.00	XXS – Small: £12.00	¼ Zip Top £27.55 -£33.10
Small – XXXL: £12	Medium – XL: £9.00	Medium – XL: £14.00	Joggers £25-30

## PE Kit Uniform

**PE Kit Days** – Students in Years 7-9 will wear their RWS PE kits to school as follows:



**RWS PE KIT**  
 RWS Rugby Shirt  
 Player Layer/ Branded RWS Sports Kit  
 RWS or Plain White T-shirt  
 Green or white sports socks  
 Football/rugby boots



### **Kit NOT allowed**

No blue or grey items  
 Non RWS items MUST be plain  
 No coloured sports socks  
 No logos except RWS  
 No sports jackets



\* **Tracksuit for timetabled PE days** – please note these will be available for purchase from Winston Sports in Orpington. Winston Sports will be selling PE Kit at the school on the dates on the previous page, or you can contact them directly to purchase at your convenience.  
 Please visit <https://winstonsports.co.uk/> for opening hours.

For further details regarding our school uniform requirements, please see our uniform page on the school website: <https://www.ravenswood.bromley.sch.uk/information/school-uniform/>



# ATTENDANCE



At Ravens Wood School, we want every student to receive the best possible education and experience—and excellent attendance plays a vital role in achieving that.

We understand you may have questions as your son starts this new journey, so we've included key information to support a smooth transition.

## Expectations and Attendance Targets

We expect all students to attend school every day and to arrive on time. Our attendance target is a minimum of 96% over the academic year—equivalent to no more than 8 days of absence.

### Punctuality:

The school day starts promptly, and students must arrive to their Form room by 8:30am. Arrivals after 8:30am will be marked as late. Persistent lateness may result in sanctions. Arrivals after 9:00am will be recorded with a U code—an unauthorised absence—which affects overall attendance.

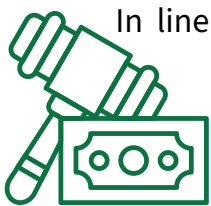


### Reporting Absence:

If your son is unwell or unable to attend school, please report the absence through the Studybugs App. When your son starts in September, we ask that you download the free Studybugs app or register on the Studybugs website. It's quick, secure, and directly integrated with our registration system, so both you and the school are immediately aware if your child is absent.



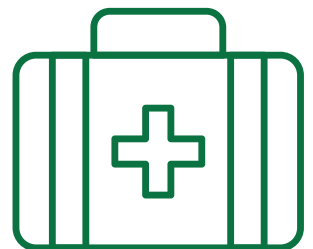
### Term-Time Holidays:



In line with Government guidance, we do not approve holidays during term time. If a holiday is taken without authorisation, the school may refer the case to the Local Authority, who can issue a Fixed Penalty Notice. Fines are £80 per parent, per child if paid within 21 days, rising to £160 if not paid within that period. Unpaid fines may result in court action.

### Feeling Unwell?

If your son is feeling slightly under the weather but you believe he's well enough to attend, please send him in. Our trained first aiders will be available to assess him if needed, and contact you if needed. Often, students feel better as the day progresses.



### The Impact of Attendance

There is clear evidence linking strong attendance with academic success. With your support, we aim to keep absences to a minimum and ensure your son makes the most of all that Ravens Wood has to offer.

**Working together makes all the difference.**

**If you ever have questions or concerns, please don't hesitate to contact us. We're here to help.**

Attendance Officer Email: [attendance@rws.uk.net](mailto:attendance@rws.uk.net)

# ENRICHMENT



## What is the Enrichment Programme?

The broad and diverse programme of co-curricular enriching activities offered beyond lesson time.

## What provision is made for students?

All departments are encouraged to offer a subject-specific extra-curricular provision that all students can access. Some clubs and activities are aimed at specific year groups or Key Stages. There are approximately 100 different clubs and activities and most departments are represented within the programme, involving around 1000 students.

## Why is the Enrichment Programme important to your son's success?

Anecdotal evidence recognises student participation in this programme can help improve academic performance. It impacts positively on moral and social development, health and wellbeing, student self-esteem, attendance and punctuality.

The clubs below are consistently very popular each year, and do fill up very quickly, so to avoid disappointment **please register your son for clubs via the ParentPay** online system as soon as the Enrichment Programme is launched at the beginning of the school year.



## Music Tuition

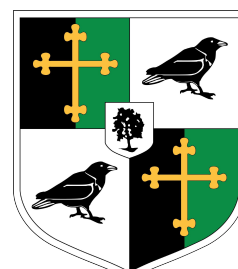


Please complete the BYMT application form included in your welcome pack. The Ravens Wood Music Department can loan instruments to students for free, subject to demand, and can also apply for Pupil Premium funding; finances should not be a barrier for your son learning an instrument or singing with a Visiting Music Teacher (VMT). If you have any further questions about individual music tuition, please do not hesitate to ask by emailing [ing@rws.uk.net](mailto:ing@rws.uk.net)

## Examples of Enrichment

The Enrichment Programme for 2025/26 will be published and shared in September. Please use the QR Code for a sample of some of the clubs that have been popular each year.

Outdoor Education	STEM Engineering
Sports Clubs	Performing Arts Club
Music Clubs	Magic and Chess Club
Accent Cookery Club	Running Club
RWS Gardening Club	Art Club



# CASHLESS CATERING

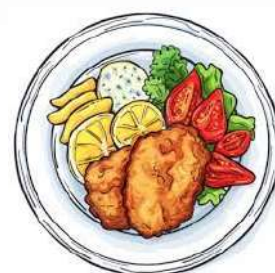


It is the aim of the school that all students should have a tasty, nutritious meal every day, and to this end our highly trained chefs are constantly seeking new ways to improve the range of food provided and to evolve their food service.

## Free School Meals

Your child may be entitled to Free School Meals (FSM). Registering is really quick and easy. The Local Authority has introduced an online FSM application service, accessible via [www.bromley.gov.uk](http://www.bromley.gov.uk) instead of the paper application. **The online and paper application forms for 2025/2026 are available from the beginning of June and MUST be completed by the end of July.** Please note only one application per family is required. You may also contact the Finance Department here at the school on [finance@rws.uk.net](mailto:finance@rws.uk.net) for further information. Please note an application should only be submitted if your child has not been in receipt of Free School Meals since April 2018.

For every child registered, Ravens Wood School will receive additional Pupil Premium funding. With this money we can provide additional resources including computers, text books and more one to one tuition.



Department  
for Education

**Free  
School  
Meals**



THE LONDON BOROUGH  
[www.bromley.gov.uk](http://www.bromley.gov.uk)

## Cashless Payment System

The system uses an image of the fingerprint to create a mathematical algorithm and then discards the fingerprint; only the numbers remain and these cannot be reinterpreted back into a fingerprint image.



**ParentPay**

Benefits of this system include: -

- The money you allow your son to have is used for meals. Prices are available on our website.
- It provides a considerably quicker service and reduces queues.
- If your son is entitled to free school meals, no one else is aware of this.
- A standard daily spend limit is set at £6 but this can be amended by emailing [support@rws.uk.net](mailto:support@rws.uk.net)

## How can you add money to your son's account?

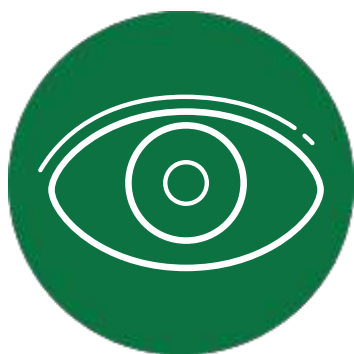
Online Payments:

- Before your son starts with us you will be sent a letter via email detailing your ParentPay username and password login details.
- Payment by debit/credit card: Make a payment using your debit/credit card, by visiting [www.parentpay.com](http://www.parentpay.com).

Should you require further information please contact [office@rws.uk.net](mailto:office@rws.uk.net)  
or telephone Reception on 01689 856050



# SAFEGUARDING



**Seen**



**Heard**



**Helped**

**STOP@RWS.UK.NET**

**STOP RACISM  
STOP SEXISM  
STOP HOMOPHOBIA  
STOP BULLYING  
STOP HARASSMENT  
STOP PREJUDICE  
STOP ABUSE**

DISCRIMINATION OR ABUSE OF ANY KIND IS NOT TOLERATED AT  
RAVENS WOOD SCHOOL



**RAVENS WOOD SCHOOL**

Ravens Wood is committed to safeguarding and promoting the welfare of children. Parents can feel confident that safeguarding is at the forefront of our day-to-day life.

The Safeguarding Team at Ravens Wood will become known to your son as soon as he enters the school. As parents / carers you will also receive regular updates via the school's newsletter or by letter regarding safeguarding issues. We ask that you familiarise yourself with the school website where there is a wealth of information relating to issues ranging from online safety to mental health issues: <https://www.ravenswood.bromley.sch.uk/about-us/child-protection-and-safeguarding/>

The school promotes the wellbeing of all our students in a variety of ways. If your son has worries or concerns, they should speak with their Form Tutor, Head of Year or a member of the Safeguarding Team. The school also has its own [talk@rws.uk.net](mailto:talk@rws.uk.net) email which we encourage students and parents/carers to use if they wish to express concerns about their own or another student's emotional wellbeing. Details of youth agencies available in the school, such as counselling and support services can be found on the school website: About Us / Child Protection & Safeguarding / Online Safety and Information / Emotional Wellbeing. We also have a [STOP@rws.uk.net](mailto:STOP@rws.uk.net) email address for students to report any form of bullying, harassment or abuse that they witness or experience as we will not tolerate this kind of behaviour in our school.

**TALK**



If you're worried  
about something or  
someone, you can  
email us at  
[talk@rws.uk.net](mailto:talk@rws.uk.net)

**@**

The email account  
is checked daily, so if  
you have an urgent  
concern speak to a  
member of staff or  
email [talk@rws.uk.net](mailto:talk@rws.uk.net)

**RWS**

# MEDICATION



In line with Government and London Borough of Bromley Guidance, we have in place a Medicines in Schools Policy.

- Prescribed medication should only be taken during the school day when essential. Parents/ carers are encouraged to administer medicines at home whenever possible, e.g., if 3 doses of antibiotics are to be given, your son should have one before coming to school, one as soon as they get home and the last one before bed.
- All Non-Prescribed/Prescribed medicines to be administered in school must have written parental consent using the appropriate online form. Also, for long term medication we must have written confirmation from the GP, hospital, registered homeopath or dentist that the medicine needs to be given within school hours, the dosage and times etc. All forms can be completed online by using the QR code, or the attached link: <https://www.ravenswood.bromley.sch.uk/information/student-information/> and clicking the online Medication form.
- **In line with LBB Policy, we cannot administer aspirin without a doctor's prescription.**
- (A child under 16 should never be given aspirin unless prescribed by a doctor).
- Students' own paracetamol/pain relief can only be held within the medical room for students to self-administer with supervision, when there is an online consent form signed.
- All medication sent into school can be Non-Prescribed/Prescribed medicines which are in-date, labelled (prescribed) and in original packaging (boxed, no single strip) with pharmacy prescription label and dosage instruction leaflet.



**+16**

Students will hold emergency medication with them e.g., reliever inhaler and adrenaline auto-injectors, and parents are asked to provide a spare to be stored in the first aid room.



The school will endeavour to return expired medication, however medication not collected will be destroyed. If new medications are required, it is the responsibility of the parent/carer to supply the school with these along with the appropriate completed online forms.



If your son has a medical condition, please complete the relevant Individual Health Care Plan IHCP form via the online forms system at the below link or QR code:

<https://www.ravenswood.bromley.sch.uk/information/student-information/>



If you have any questions or queries, please contact The Medical Coordinator  
01689 856050, or [medical@rws.uk.net](mailto:medical@rws.uk.net)

You may also contact Bromley Healthcare  
By phone or email: 020 8315 8715 option 8  
[BROMH.SHRD@nhs.net](mailto:BROMH.SHRD@nhs.net)

# STAY CONNECTED



## Ravens Wood School Apps

The school uses several Applications and websites to support with learning and communication. The main ones are listed below. As you enroll, you will be sent information on how to sign up and register for each one. Individual subjects will use website to support learning outside the classroom, but your child will be made aware of these in lesson



### My Child at School

This app provides information on attendance, rewards, reports and sanctions. We will also send key communication through this app.



### SatchelOne (Show My Homework)

All homework is set via this app/website. There is a student version and parent version. You will be able to see homework, revision materials, timetable information and subject based announcements



### Study Bugs

You can download and use this app to report attendance.



### Parent Pay

This website is used to provide any payments to school. There is a page on our cashless system in this guide.



### Socs

All school sports fixtures are recorded here so you have an overview of what is coming up. <https://sport.rws.uk.net/>



### Wellbeing hub

This website allows you and your child to log in and access key support for wellbeing and mental Health  
<https://club.teentips.co.uk/login/>



# NEWS AND UPDATES



To help you stay up to date during your child's transition to Ravens Wood, please check our Transition Padlet (via the QR code below) for key updates and resources. Our school website also contains important information and announcements. You'll receive our fortnightly newsletter with key dates and events, and can follow us on social media for regular news and highlights. These platforms are the best way to stay connected—now and throughout the school year.

## RWS News



Transition  
Updates via  
**Padlet**



## School Website



Our new Whatsapp  
Broadcasting  
Channel



Please note that your phone number will not be visible to the school or to other followers of the channel, ensuring your privacy at all times.

## Social Media



[ravens.wood.school](https://www.instagram.com/ravens.wood.school)



Whatsapp Broadcast Channel (scan QR code)



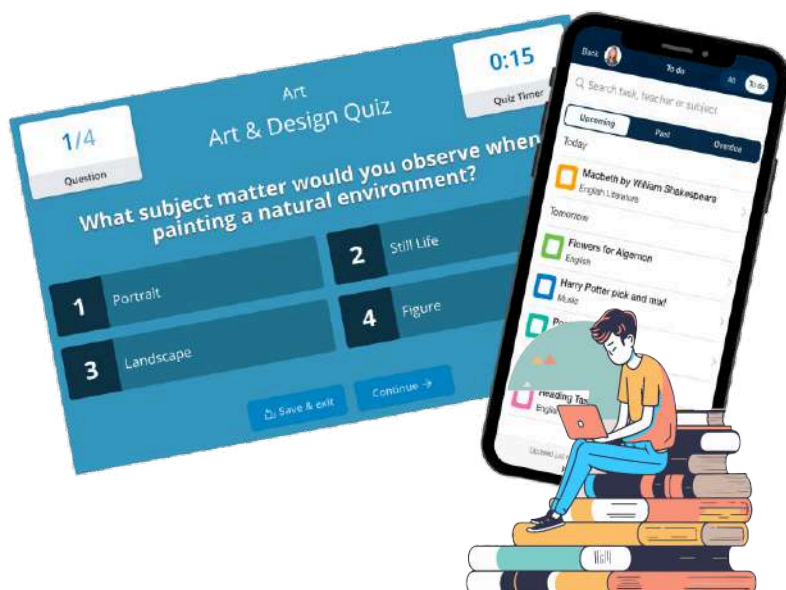
[sport.rws.uk.net](https://sport.rws.uk.net)

# HOMework



Students are expected to complete homework tasks to the best of their ability and to the deadline set. Tasks will be designed to challenge and consolidate learning, with a focus on retrieval-based tasks. Students will be set homework regularly, which will include a range of tasks such as;

- Written work
- Reading in preparation for a lesson
- Reading a prescribed text
- Selecting and retrieving information
- Revising key spellings and definitions
- Preparing for summation or formative assessments
- Responding to feedback given by the teacher
- Practising and honing a specific skill
- Background research
- Online quizzing



All homework will be set via **Show My Homework** (see QR code below) and time will be spent in class to ensure that students are fully aware of what is expected of them. We will continue to recognise and reward those students who produce high quality homework and display a positive attitude and level of effort. Parents/Carers will be sent log in details in September so you can support your son with managing his deadlines.

satchel:one  
Together through education

Select "Parent"

Need help logging in?

Logging in as a parent

Sign up

To create an account, select 'I don't have an account yet'. You will need a parent code.

Forgot password?

Reset your password using your school email address.

Email not recognized?

Correct any typos or try a different email address. We are not able to share any login details for security reasons.

Personal Email

Code for child (provided by school)

Login

Staff Parent Student

I already have an account

I don't have an account yet

Queensmead School

email@gmail.com

12345678

I'm not a robot

Sign up

SHOW MY HOMEWORK







## English

### Content

Year 7 is all about developing our students' love of reading and writing, and this includes classical books, poems and plays as well as contemporary ones. As mentioned, our poetry anthology is a special and unique addition, which also celebrates the old and the new.

To begin, Monstrous and Magical Imaginings provides a bridge between their primary school learning and some of the skills that are essential for progressing through Key Stage 3 and beyond. For example, confidently varying sentences for effect and tapping into the full range of punctuation to create voice and meaning. But at the heart of this is the magic and wonder of a variety of engaging literary extracts.



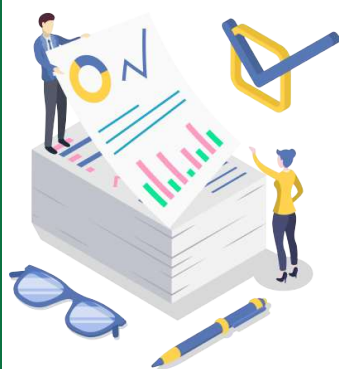
Our literary journey continues on with the ultimate story-teller: Dickens, and his much-loved A Christmas Carol. But what are some of the key influences of more recent story-telling? And where do many of the classical references we encounter time and time again come from? Students get the opportunity to delve into some of the important classical texts in our scheme of learning, Mythos, by Stephen Fry, and later in the term, they will read Shakespeare's A Midsummer Night's Dream – a fun and fantastical play, but also a great opportunity to see the influence of those classics on wider literature – especially Shakespeare- over time.

Read All About It! Is aimed at helping students to develop an appreciation of the significant impact of media on our lives and the changing conventions used across the media to communicate with different demographics.

Each week, students visit the library for a lesson of shared and private reading, where, thanks to the extensive collection of books, they can escape into whatever world they choose.

### Assessment

1. A snapshot assessment is used to establish students' entry level reading and grammar, as well as core non-fiction writing skills.
2. The first in-year assessment follows their study of the writer's craft in A Christmas Carol and assesses creative writing and comprehension based on the book.
3. The end of year assessment involves a range of comprehension and grammar questions to consolidate their learning across all units. They will also complete a further descriptive writing task, following the mid-year feedback received.



### How you can support your son's study

- Set time aside for them to read at home- reading with, or to them if desired
- Ask them questions about the books, plays and poems they are studying, getting them to tell you about the characters, the storylines and what they are enjoying
- Check in with the length and quality of homework produced, getting them to think about the detail and presentation of their work
- For additional home- learning, BBC Bitesize is excellent and should you wish to provide a revision book, our recommendation is the CGP English revision guide.





## Maths

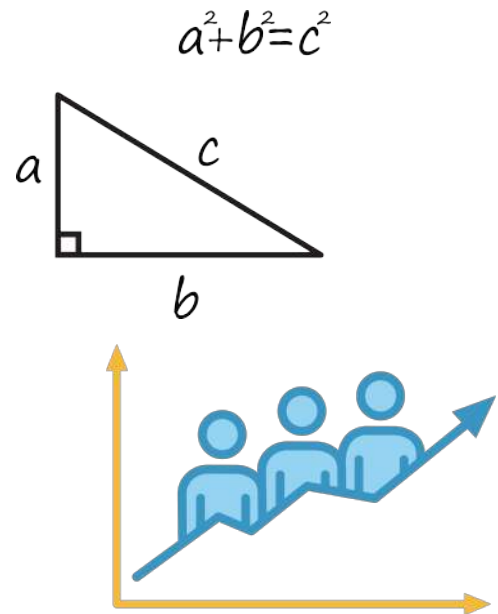
### Content

During Year 7, students study a range of concepts, from each of the six strands of the Curriculum; Number, Algebra, Geometry and Measures, Probability, Statistics and Ratio and Proportion. This builds on their knowledge from primary school and extends it towards their GCSE capabilities. With the GCSE examinations now more demanding, we start to work on and investigate more Key Stage 4 content even in Year 7. This requires the students to challenge themselves both in and out of class and to practice the more problem-solving based questions to test their knowledge and skills.



### Assessment

Students will be formally assessed at regular intervals as per the school calendar to monitor progress. The assessments will be cumulative to build on the students' learning and not to pigeonhole their knowledge of individual concepts. The feedback from each assessment will clearly identify areas that students will need to further study to improve their skills. This feedback will be provided in class and the students are expected to comment on and respond to any questions or comments made by the teacher.



### How you can support your son's study

Work closely with your son whilst he completes his homework – ask him to teach you a new technique or method each week so he can prove to himself he has understood it! Encourage the practice of times tables and mental calculations



- Encourage your son to challenge himself to improve his speed and accuracy on the 'maths trainer' from the website

[www.mathsisfun.com/numbers/math-trainer-multiply](http://www.mathsisfun.com/numbers/math-trainer-multiply)

- Discuss the progress your son is making on a regular basis using his exercise book and green pen improvement work as a focus of the discussion.
- Support your son when it comes to the completion of homework. When homework is set in class, encourage your son to complete it as early as possible so that if he is struggling with anything there is time for him to come and speak to his teacher in school.
- Ensure that your son has all the equipment he needs for every maths lesson. It is vital that he has access to his calculator on a regular basis, whilst a geometry set is used at specific points in the year.





## Science

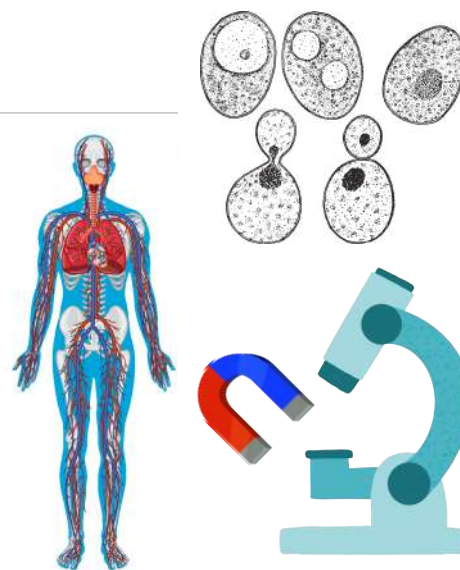
### Content

During Year 7, students study a series of modules which cover the key components of the new Key Stage 3 framework and are outlined below. Students will also cover key skills such as practical planning, graph drawing, health and safety.

**Term 1:** Science Skills, Cells, Particle Model, Waves: Including light and sound.

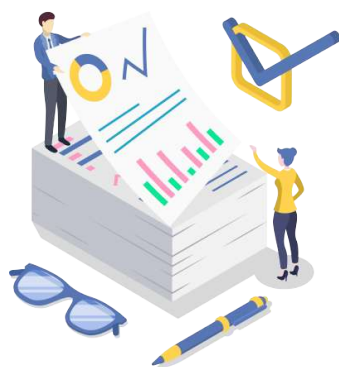
**Term 2:** Periodic Table, Elements, Metals and Non-Metals, Variation, Energy Transfers, Interdependence and Levels of Organisation,

**Term 3:** Forces, Electromagnets, Separating techniques, Plant Reproduction, Human Reproduction and Space.



### Assessment

There is a rigorous and cumulative programme of both lesson-by-lesson retrieval and end of topic assessments. At the beginning of all topics, students are given a homework quiz to establish prior knowledge. Throughout a series of lessons on a topic, we firstly ensure all students have the expected levels of prior knowledge. When secure, we build on this fundamental and critical knowledge by introducing core components of the new topic. We strive to ensure students reach their pinnacle, whereby they can extend their newly gained knowledge to unfamiliar situations and to answer truly awe and wonder inspiring questions such as 'What is a rainbow?', 'What are the challenges astronauts face when baking cookies?' or 'Where did we come from and where might we end up?' Students will be formally assessed at regular intervals as per the school calendar to monitor progress. The assessments will be cumulative to build on the students' learning and not to pigeonhole their knowledge of individual concepts. The feedback from each assessment will clearly identify areas that students will need to further study to improve their skills. Student attainment will be reviewed regularly, throughout set change weeks to ensure that students are in the sets that is most suitable for them. At the end of Year 8, the top two sets on each side of the school will initially be put forward for Triple Science and the remaining sets will be studying for the Combined Science GCSE.



### How you can support your son's study

- Ensure your son is aware of assessment windows and topics that will be on those exams.
- Ensure homework is completed to your son's best ability and on time.
- Encourage your son to proof-read their work and make any necessary corrections before handing work in.
- Ensure your son has all the correct equipment for each lesson.
- Support your son's learning by purchasing the CGP KS3 Science Revision Guide and workbook (this will be available through school via Parent Pay).



# READING LIST



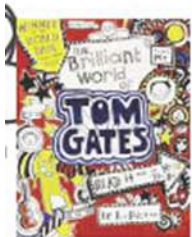
YEAR 6 - 7 TRANSITION

## Reading List

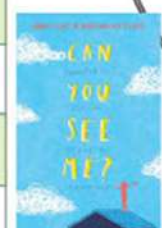
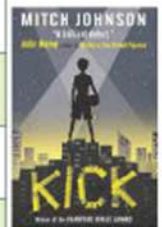


We hope very much that you enjoy reading *A Wolf Called Wander* by Rosanne Parry over the summer. The book was kindly donated to you by the PSFA. Below are some further suggested summer reads for you all. Ms Adams, our school librarian, would love to find out what you think about these books, so please visit the library and share your thoughts in a book review in September.

### ★ Developing Readers

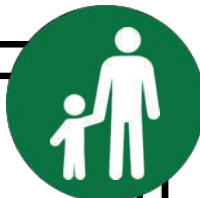


BOOK TITLE	AUTHOR	GENRE
Hacker	Malorie Blackman	Mystery/ Thriller
★ AniMalcolm	David Baddiel	Comedy
Kick	Mitch Johnson	Realistic / Sport
Malamander	Thomas Taylor	Fantasy / Adventure
You are a Champion	Marcus Rashford	Non Fiction / Self Help
High-rise Mystery	Sharna Jackson	Mystery
Skulduggery Pleasant (series)	Derek Landy	Fantasy / Supernatural
The Graveyard Book	Neil Gaiman	Horror / Supernatural
★ Brilliant World of Tom Gates (series)	Liz Pichon	Comedy
Wink	Rob Harrell	Realistic
Impossible Creatures	Katherine Rundell	Fantasy
The Goldfish Boy	Lisa Thompson	Realistic
Wonder	R. J. Palacio	Realistic
The Boy who Made Everyone Laugh	Helen Rutter	Comedy
★ The Final Year	Matt Goodfellow	Realistic
When the Sky Falls	Phil Earle	Historical
★ Boy in the Tower	Polly Ho-Yen	Dystopia/ Sci Fi
Can You See Me	Libby Scott & Rebecca Westcott	Realistic





# RAVENS WOOD PSFA



Welcome to the Ravens Wood School **Parent, Staff and Friends Association**

We are delighted that your son will be joining Ravens Wood and hope he will be very happy here. The Parents, Staff and Friends Association (PSFA) is a group of volunteers who support the school by helping at events, selling new and pre-loved uniform, and organising fundraising activities. The funds raised are shared across school departments to provide additional resources that enhance teaching, learning, and the school environment. Events have included quiz nights, race nights, Christmas Market, and comedy evenings. If you'd like to get involved, we warmly invite you to join the PSFA—details on how to sign up and upcoming events can be found on the school website and in regular school communications. We look forward to meeting all Year 7 Parent/Carer's at our annual **'Cheese and Wine Welcome Evening.'** This will be held on 10th September; an invitation will be sent to you closer to the time.



## WELCOME!

You're warmly  
invited to our  
parents  
get-together; a  
chance to meet  
each other and  
the PSFA



WEDNESDAY 10TH SEPTEMBER  
**6:30 – 8:00PM**

Drinks and nibbles provided  
– just bring yourselves



**To find out more about  
the PSFA email:**

[ravenswoodpsfa@yahoo.com](mailto:ravenswoodpsfa@yahoo.com)

**Twitter/X: @RW\_PSFA**

If you are able to offer a few hours of your time during the school year, by either attending meetings, assisting at school functions or supporting our events, then please do get in touch.

# FRIENDS OF RAVENS WOOD



At Ravens Wood School, we are committed to creating the best learning environment possible for our community. Central government provides funds for the basics, such as buildings, teaching staff and essential resources, but the school needs more than this to provide the exceptional and diverse range of opportunities we offer. Without support from parents, this range of opportunities would be difficult to maintain.



We remain acutely aware of the economic pressures currently facing family budgets, but would ask you to consider making a welcome and valued contribution.

By becoming a 'Friend of Ravens Wood School' and giving a regular amount or annual donation to the fund, it makes a real difference in the school being able to keep resources and equipment up to date, enriching and enhancing the unique and special opportunities available to your child/children.

In addition, if you are a UK taxpayer you are able to make a Gift Aid declaration which allows the school to claim tax you have already paid back from the Inland Revenue. This means that every pound you donate will be worth an extra 25 pence. Please tick the relevant box when prompted on the Just Giving platform.



We are extremely grateful for the support we have received from our parents and carers, and do hope that you will consider helping the school in this way. Please scan the QR code or follow the URL link as detailed below.





# RWS STUDENTS



## **What Primary School did you go to?**

Warren Road Primary School



## **How did you find Induction Day?**

It was fun; we got to try out the food in the canteen and we had a tour. We also got to try out some lessons. I really liked the Science lesson where we used universal indicator in an experiment.

## **What was it like in September?**

I was excited and nervous to start. I wasn't sure what to expect, particularly what lessons would be like. But after a couple of weeks, I was used to it and it was no longer scary. You will also be given a Black and Green booklet which has a map on the back which really helps with getting around.

## **What was it like being a Year 7 at RWS?**

It's strange no longer being at the top of the school and being the smallest again but there are loads of opportunities for Year 7s, such as the Interform Cup. I recently came second in the Interform Chess Competition. There are also lots of different sports you can be a part of as well and a baking club which takes place in the school kitchen.

## **What were the best bits of Year 7?**

DT is really different to primary school because we get to work in the workshop with the tools. I really enjoyed making my passive amplifier and use it all the time.

## **What advice would you give to a Year 6 student about starting here?**

Don't be nervous. You will soon adapt to life at Ravens Wood and everyone is really friendly and will help you settle in.

## **What Primary School did you go to?**

St Joseph's Primary School



## **How did you find Induction Day?**

I thought it was fun. We took part in a Team Building session with our forms which was really enjoyable. The teachers were really welcoming, and it was nice to meet them.

## **What was it like in September?**

I was feeling really nervous because none of my friends from my primary school were in my form but my form tutor was really nice and sat me with some friendly faces; I made friends quickly.

## **What is it like being a Year 7 at RWS?**

It feels a lot more grown up than primary school and you feel more like a gentleman. We get lots of perks in Year 7, for example we get to go to break and lunch ten minutes earlier than the rest of the school.

## **What are the best bits of Year 7?**

I think the sports are definitely the best bit. In primary school you don't get to do rugby and basketball but we get to play those here. There are loads of opportunities for all the sports; if you want to represent the school you will. I'm looking forward to trying out new sports this summer!

## **What advice would you give to a Year 6 student about starting here?**

Don't worry about leaving your current primary school because you will make new friends and meet new teachers but you can still keep in touch with your old friends. Don't be afraid, it's great!



## **Ravens Wood School**

Oakley Road, Bromley, Kent, BR2 8HP

Telephone: 01689 856050 E-Mail: [office@rws.uk.net](mailto:office@rws.uk.net)

Web: [www.ravenswood.bromley.sch.uk](http://www.ravenswood.bromley.sch.uk)

